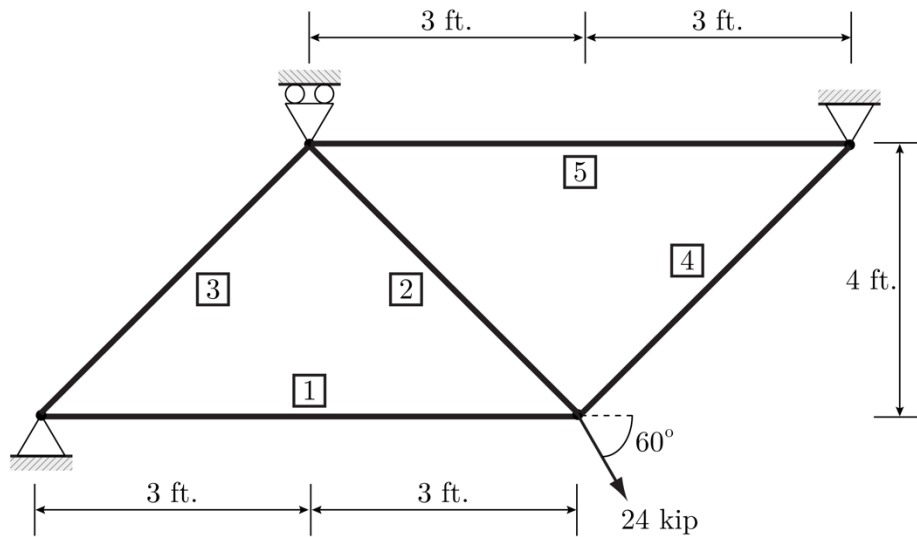


CE 325 Spring 2026 HW#6

Due Thursday, March 26, at the beginning of class

1. For the 2D truss structure shown below determine joint displacements, axial bar forces and stresses, and support reactions using the Matrix Displacement Method:

- (10 pts) By hand
- (10 pts) Using Python
- (10 pts) Using SAP2000



$$E = 10,000 \text{ ksi} ; A = 2.0 \text{ in.}^2 \text{ for all members}$$